

In the Garden - December 2006 - Page 11

By Garry Sankowsky



*Meiogyne cilindrocarpa*



*Meiogyne hirsuta*



*Melicope rubra*



*Melodorum crassipetalum*



*Mesua larnachiana*



*Micromelum minutum*



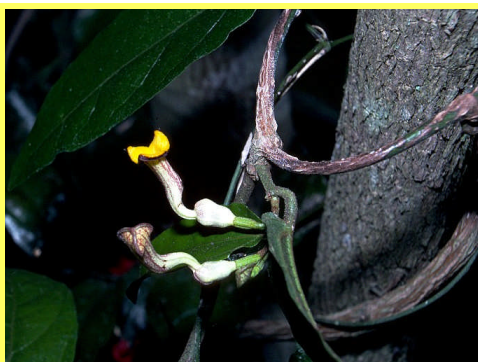
*Neolitsea brassii*



*Neostrearia fleckeri*



*Nothocnide repanda*



*Pararistolochia* sp. Gilles Crater



*Parsonsia latifolia*



*Passiflora aurantia*